

Contributing to the Local Society

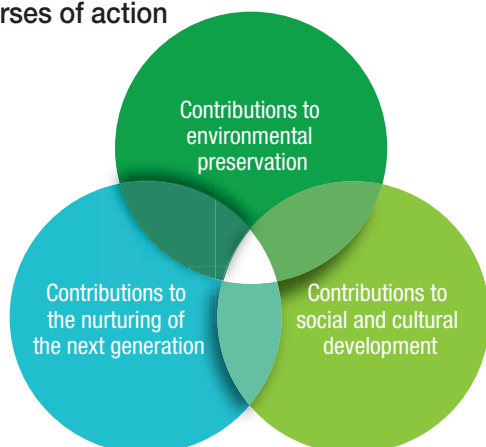
CKD aims to be an “open” company that can contribute to society and local communities.

We aim to be an “open” company that can contribute to the sustainable development of society by fulfilling our social responsibilities through our business activities and tackling the issues facing society and local communities.

Policy

As a good corporate citizen, we value engagement with local communities, promote social contribution activities, and strive to play our part in creating an affluent society. (Based on the Corporate Philosophy, Corporate Commitment, and Standards of Conduct)

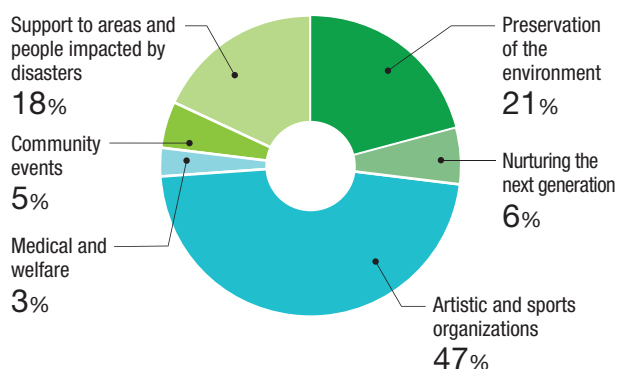
Courses of action



Initiatives

CSR Funding

Through our CSR funding, which started in 2006, we have been providing continuous support and actively carrying out activities linked to social contribution. In fiscal 2019, we supported environmental conservation activities and social and cultural initiatives, such as promoting sports and the arts.



Creating a System Allowing Time off for Volunteer Activities

With the goal of supporting employees in their social contribution activities, CKD created a system allowing 3-5 days off per year for volunteer-related activities. This allows each employee to contribute to society in an area in which they feel familiar, with possible fields for action including welfare activities, disaster relief and recovery efforts, and activities aimed at preserving natural habitats.

Contributing to the Preservation of the Environment

CKD forestation activities

CKD employees and their families participate in volunteer activities to preserve forest areas in the Kaisho Forest area of Seto City, Aichi Prefecture. This area has volunteer activities throughout the year, including pruning and trimming, maintaining the trees and bushes around the viewing area, and preserving the promenade.



Clean-up activity around the Oyama River

CKD sponsors the Oyama River clean-up activity, in which employees and local residents work together, every September. The effort serves to revitalize the area around the Oyama River that runs through Komaki City, Aichi Prefecture, where the Company's head office and factory are located, and contributes to the preservation of a rich environmental area.



Nurturing the Next Generation

Teaching science through manufacturing (monozukuri)

CKD sponsors a science class for elementary school students in the area around the Komaki facility, where the head office is located. Noting that children are becoming increasingly distanced from science, our goal is to increase their interest in science and nurture those who will be the leaders in the years ahead.



Practical training for those studying pharmaceuticals

CKD also conducts practical training for pharmacy students in their fifth year of study. The training centers on the theme of deepening knowledge related to PTP* sheets, including how to operate the PTP for pharmaceuticals packaging machines and how PTP sheets are manufactured.

* PTP stands for "Press Through Package", where medicine can be taken out by pressing it through the enclosing package material.

Sponsoring Science Inkare

In fiscal 2019, one of 102 student presentations from around Japan was selected to receive the CKD award.

Contributing to Social and Cultural Development

Eco-cap and used stamp collection activities

CKD is involved in the collection of PET bottle caps and used stamps. The collected caps are sold to recycling companies, with the profits donated to provide vaccines to children around the world. In fiscal 2019 the collected caps were used to fund vaccines for 139 people. Used stamps are donated to organizations providing medical support overseas or sold to collectors, with gains of sales used to fund activities. In fiscal 2019 we collected 1.2 kg (equivalent to ¥4,000).

Efforts aimed at promoting blood donations

CKD has conducted blood drives since 2006. In fiscal 2019, 301 people took part.

Table for Two

Table for Two is a project that sends meals to children in Africa, funded through a donation of ¥20 per meal at the Company's cafeteria. Cafeterias at four CKD plants in Japan take part in the program and in fiscal 2019, we donated enough to fund 13,952 meals.

Social Contribution Activities at Overseas Group Companies

Efforts to preserve the environment in China

CKD (China) Corporation participates in annual activities to preserve the environment such as promoting eco-activities and cleaning up refuse around local roads. In fiscal 2019 it cooperated with companies located around the plant on efforts to keep China's cities and towns clean.

Efforts to preserve the environment in Thailand

The annual social contribution activities of CKD THAI CORPORATION LTD. include making donations and participating in cleaning efforts. In fiscal 2019, it cleaned refuse from Pak Nam Prasae Beach in Rayong Province.



Efforts to preserve the environment in the US

CKD USA CORPORATION participates in the Christmas tree decorating event at the Brookfield Zoo in Chicago, Illinois. A portion of the participation fee is donated to fund the protection of wildlife and forests. The company's social contribution efforts also include participation in Toys for Tots, which provides Christmas presents for underprivileged children.

