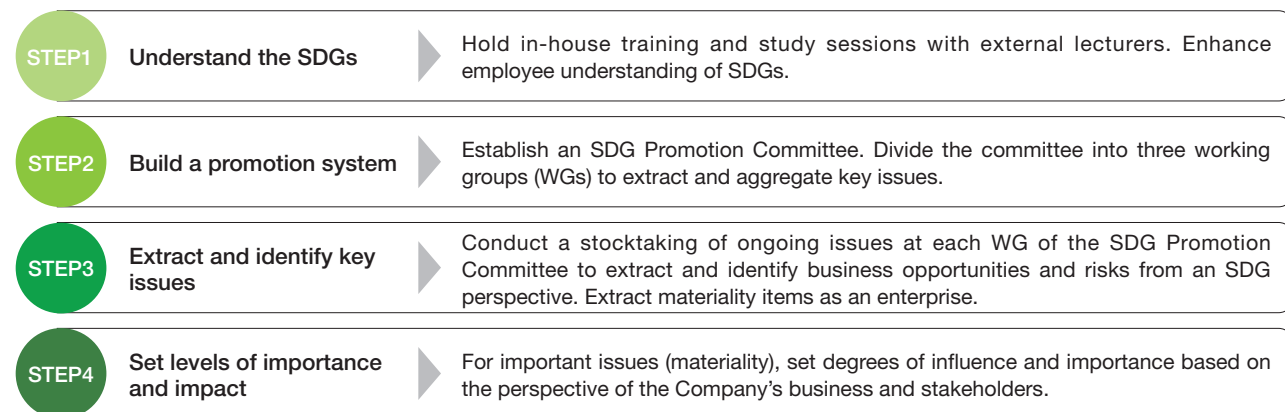


Materiality

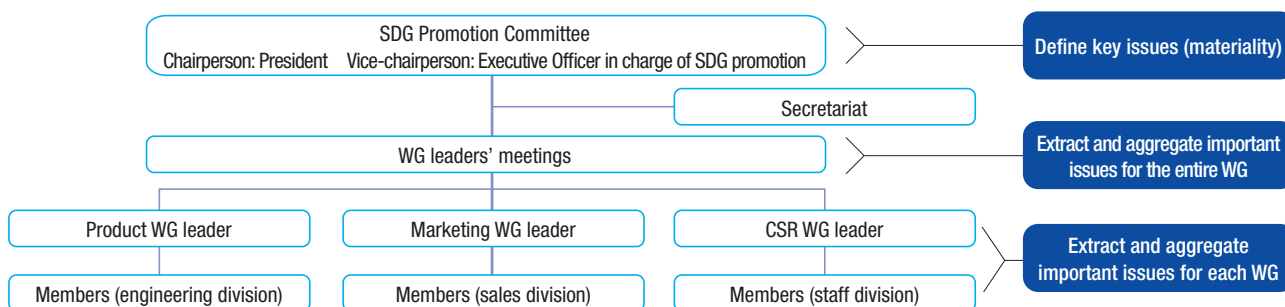
Sustainable Growth and Enhancing Corporate Value

In order to realize sustainable growth and enhance corporate value, we have established an SDG Promotion Committee to identify important issues that should be prioritized. Going forward, we will strive to set target values and KPIs (Key Performance Indicators) for these issues and implement specific initiatives to solve them in order to improve corporate value.

Priority Identification Process



SDG Promotion Committee System Diagram



Materiality Matrix

Business Environment Foundation Society

